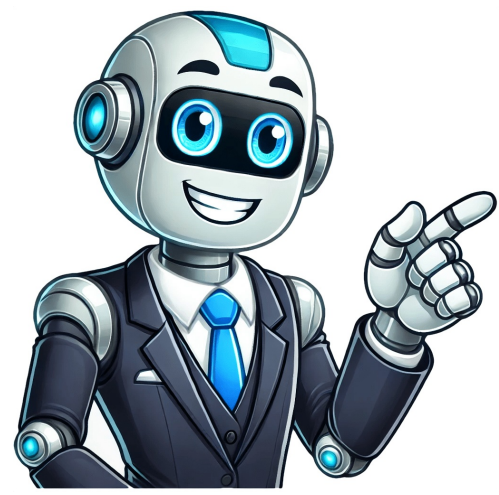


[Click Here](#)



Factory reset shark ion robot

If you're still experiencing issues with your Shark robot after troubleshooting, you can try resetting it to its factory settings. This process varies depending on the method you choose. To reset via the SharkClean app, follow these steps: 1. Open the SharkClean app and go to Settings. 2. Tap on Factory Reset. This will restore your Shark robot to its factory settings, removing any saved data from the cloud and resetting it to its default configuration. However, if you're unable to connect to a Wi-Fi network, performing a manual reboot can also resolve issues. To manually reset your Shark robot: 1. Locate the POWER switch on the side of the robot. 2. Switch the POWER switch to OFF. 3. Wait for at least 10 seconds before turning the Shark robot back on. Resetting your Shark robot is an option when you're experiencing Wi-Fi connectivity issues, cleaning schedules not being followed, or if it's leaving out mapped areas. Second-hand Shark robot vacuums can start cleaning at odd hours, sold or lent to others, and sometimes randomly reset themselves. This random resetting often resolves software and technical issues but comes with setbacks. When resetting the Shark robot vacuum, you'll lose data like cloud information, time zone settings, preferred language, Wi-Fi passwords, schedules, home maps, and app settings. To preserve this info, note it down before resetting. There are two ways to reset a Shark robot: using the SharkClean app or manually with the power button. The app method removes all data from the cloud and requires linking the vacuum to the same Wi-Fi network. The manual reboot doesn't erase cloud data but is useful for problems like connection issues. Before selling, lending, or resetting due to Wi-Fi connection issues, it's worth noting the importance of preserving user settings when performing a factory reset on your Shark robot vacuum. Looking forward to walkin through each one of them in detail. Before resellin or lendin the vacuum cleaner, do factory reset becase: Even thou Shark robot vacuum dont hold confidential info, it stil have your email address and map of ur home. Do factory reset for precaution. Better safe than sorry. Resetting also benefit new owner, they can start anew with default settings and customize them accordin to ther preference. Wi-Fi connection is crucial for smart robot like Shark ION. When tryin connect it to Wi-Fi for first time, it take few attempts. Router must have recommended frequency, and Shark robot must be within frequency radius. If shark robot hav issue connecting to Wi-Fi, problum might be with router or vacuum itself. Step 1: Restart shark vacuum and router. Step 2: Disconnect and re-enter Wi-Fi details. Step 3: Do manual reset. Don't go for reset without tryin above two step first. Try control shark vacuum through Shark app, but it not follow instrukshun, there are two posible reason: Software issue or Memory out of storage. Solution 1: Try updating to latest version to resolve software issue. Solution 2: If memory full, factory reset is only solushun. It will erase temporary data and free up space. Shark robot vacuum might malfunction due to specific error code. You can refer to shark vacuum manual or visit Shark clean website for help. You can also contact customer support if you dont want lose all data. Try these methods fix robot vacuum before goin for factory reboot. There are a few reason why shark robot wont turn on: Charging station have some issue, Filter, brush roll, or side brush clog up. Battery need replacement, or something stuck in wheels that not let them move freely. Check if there any damages to wheel and try clean charging surface with dry cloth. If probem stil exist, go through my in-depth article "Shark ION robot not charging" for more solutions. When shopping for an appliance, having experience matters. A decade of writing about cleaning and home maintenance gives valuable insight into what works best. One area where many struggle is maintaining a clean home despite busy schedules. Some people turn to smart cleaning robots like the Shark Ion Robot as a solution. These devices can save time and effort, allowing you to focus on more important tasks. The Shark Ion Robot features an easy-to-use app for monitoring and controlling the device remotely. It also boasts a self-cleaning brush roll that collects hair, dust, and other debris. However, like any device, the Shark Ion Robot is not immune to issues. Some users report mood swings or malfunctions. In such cases, resetting the device may resolve the problem. But what is a factory reset, exactly? A factory reset sends the Shark Ion Robot back to its original settings, deleting all data and associations with the user's account. This includes schedules, maps, Wi-Fi credentials, and preferences. The action also disassociates the device from any 3rd party Smart Speaker connections. If performed via the app, the factory reset removes language selections, time-zones, and cleaning preferences to their default state. Performing the reset directly on the device retains all saved data and account associations. The Shark Ion Robot can be affected by software issues, which may cause it to malfunction or not clean properly. These issues include: - Unable to load the launcher - Automatically deleting set schedules - Cleaning at incorrect hours or inaccurately These problems could be due to excessive data in its memory and resolving this requires a reset of the robot. Given article text here The Shark Ion Robot may require a factory reset if it's not performing as expected. This blog post will guide you through the process of resetting the device to its original settings, allowing you to restore its performance. Can the Shark Ion Robot be factory reset? Yes, this process can erase all previous data and settings, giving the robot a fresh start. The process of resetting the Shark Ion Robot involves several steps that ensure a successful and trouble-free experience. To begin, connect the robot vacuum via the app and repeat the reset process if any issues persist. Once connected, test the program settings to confirm the device recognizes voice commands and responds accordingly. Next, verify the cleaning mode is working properly by selecting one of the available options and observing its performance. If the robot vacuum functions correctly after this step, it indicates a successful factory reset. Following this, consider two modes for resetting: the Hard Reset, which erases all data, or the Soft Reset, which only resets to factory settings. Before initiating the process, back up any important data and disable security features such as passwords or PINs. This ensures that the device remains accessible after the reset. Carefully follow the instructions, and double-check each step to avoid rendering the device unusable. After a successful reset, thoroughly test the robot vacuum's features and functions to ensure they are working correctly. If any issues arise, contact customer support for assistance. A factory reset can bring numerous benefits, including improved cleaning performance and clearing erroneous settings. However, several common mistakes may occur during this process. These include failing to back up data or disable security features, potentially leading to device instability or loss of information. Shark Ion Robot: When to Perform a Factory Reset for Optimal Performance Performing a factory reset on your Shark Ion Robot can help resolve issues and ensure optimal performance. However, it's not always necessary after every cleaning cycle. Factors to consider include the potential loss of stored settings and maps, which may require restarting from scratch. If you're experiencing technical issues or difficulties connecting to Wi-Fi, a hard reset may be in order. This process restores the original factory and default settings, addressing common problems such as connectivity issues or software glitches. It's recommended when: - The shark robot is not connecting to the Wi-Fi - The network has weak signal strength A manual method involves turning the robot upside down, pressing the power button for 10 seconds, waiting 10-15 seconds, and then restarting. Alternatively, using the Shark Clean app can also facilitate a factory reset. To determine if a factory reset is necessary, assess your shark ion robot's performance regularly and address any issues promptly. When you dock a Shark Robot Vacuum with a network frequency of 2.4Ghz, but it fails to connect, perform a factory reset. This often signifies software glitches that can cause erratic behavior such as unwanted cleaning or deletion of schedules. Before transferring ownership, clear your robot's configurations and tasks to ensure a smooth transition for the new owner. There are two ways to reset your Shark Robot Vacuum: through the Shark Clean App or manually by pressing the power button. The Shark Ion Robot's flashing lights display different error messages to indicate issues with the device. To resolve problems, check the table for specific light combinations and meanings. If all LED lights are off, the robot may be turned off or need charging.